A close-up photograph of a Piezobrusher PZ2-i in operation. The device is a small, cylindrical unit with a white nozzle. A bright, glowing purple and blue plasma discharge is visible at the tip of the nozzle, which is directed towards a dark, textured surface. The background is dark and out of focus.

piezo brush[®] PZ2-i

The **smallest** cold-active **plasma** integration unit in the world. For stationary mounting or in moving units.

Piezobrusher[®] PZ2-i The integration unit for universal use

Easy integration into your system: Tighten screws, connect, switch on, plasma runs.

The compact integration unit is supplied with control cable and power supply ready for use. Operation with industrial compressed air via standardized hose connection. Well thought-out and high-quality: just get started!

The advantages of the PDD-Technology[®] (Piezoelectric Direct Discharge) are obvious: Piezoelectric Direct Discharge is the most efficient excitation technology with maximum active plasma yield.

The cold-active plasma process is compatible with any material. The Piezobrusher[®] is optimized for efficiency and user friendliness, complemented by functional nozzle inserts for your application processes.

In terms of power consumption, there is no more efficient plasma process for your surface treatment on the market. Cleanly print, securely glue or effectively sterilize.

Surface activation

Laboratory technology, medical technology, precision mechanics, micromechanics, optics, assembly technology, electronics.

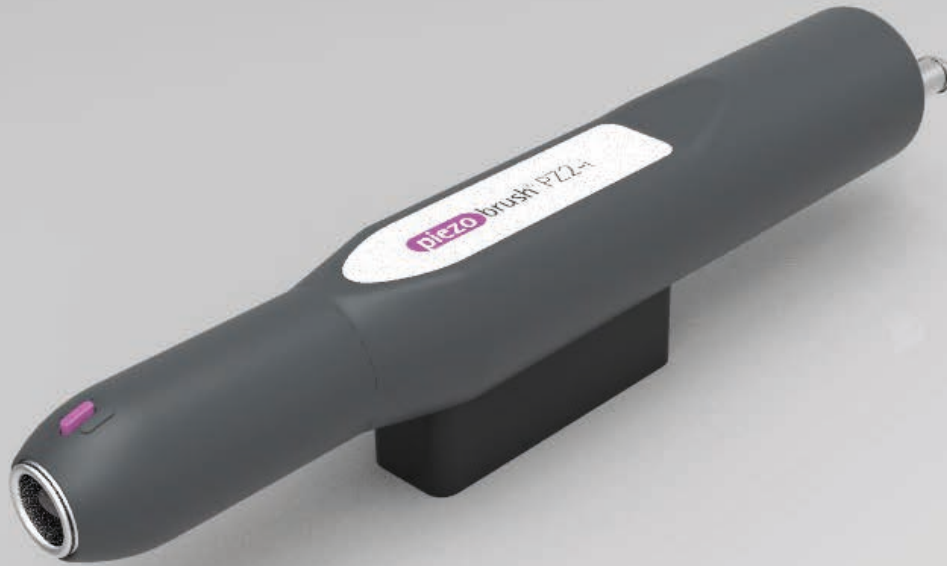
Printing and gluing

Inkjet, pad printing, microfilling, wetting behavior of automated processes.

Germ reduction

Microbiology, food and packaging technology, medical technology, microfluid technology.

piezo brush[®] PZ2-i



The solution for your 24/7 applications in industry and laboratory.



PZ2



Plug socket



Handheld

Technical specifications

Electrical connection	110 - 240 V / 50 - 60 Hz / 15 V DC
Power consumption	max. 30 W
Weight	180 g
Plasmatemperature	< 50 °C
Typical treatment distance	2 - 10 mm
Typical treatment width	5 - 20 mm
Design integration unit with gas connection	

Features

- Operation with compressed air or nitrogen
- Suitable for almost all materials
- Cold active plasma
- Easy integration
- Maximum operating safety
- Optimal efficiency
- Trigger via external switching signal
- Variable exchange nozzles: for special materials and geometries



Relyon Plasma GmbH
Weidener Straße 16
93057 Regensburg

Tel.: +49 941 60098-0
Fax: +49 941 60098-100
www.relyon-plasma.com

relyon **plasma**[®]